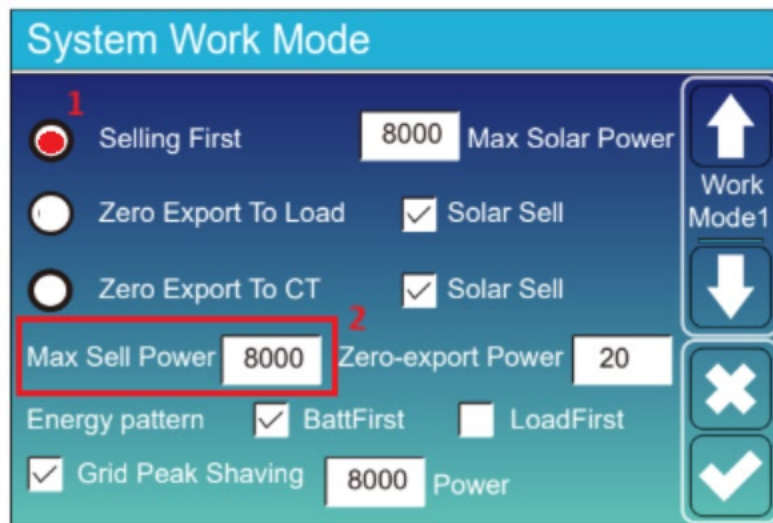


Knowledge Base Article

What are the steps to discharge the battery power back to the grid?

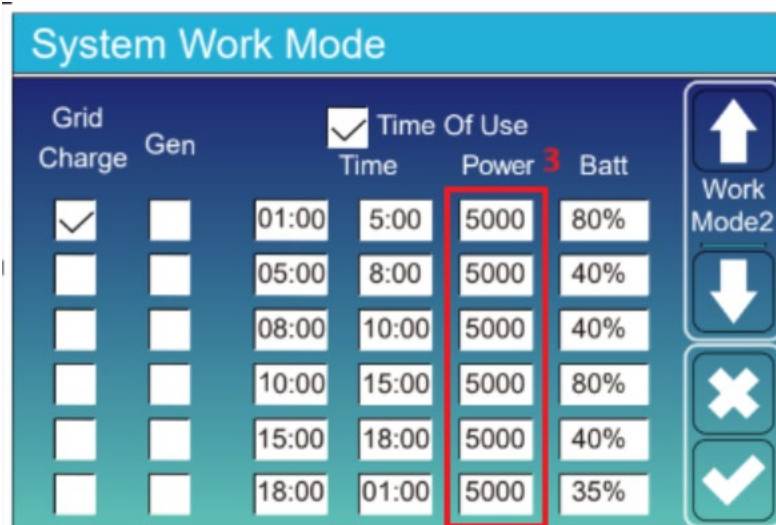
1. On the LCD screen, click on the gear icon -> click on System Work Mode.

Remotely open Solarman Business -> Open the Plant -> Click on Devices -> Click on Inverter -> Click on Device Control -> Click on **System Work Mode-1**



2. Check "Selling First"
3. "Max Sell Power" does not need to be changed. This is the max to sell power of the DC sources (PV + Batt) to the grid.
4. Select the arrow on the bottom right-hand corner to save the settings.
5. On the LCD screen, scroll down to Work Mode 2 using the down arrow on the right-hand side.
 - a. Remotely open Solarman Business -> Open the Plant -> Click on Devices -> Click on Inverter -> Click on Device Control -> Click on **System Work Mode-2**

Knowledge Base Article



- In TOU the "Power" column you can set how much battery power the inverter should discharge towards the AC loads (backup load panel + house loads) till the Battery SOC is reached. Keep in mind that 8000W is the maximum for NV7600 and set as default.

Note: The battery power is discharged directly onto the inverter's AC bus and is not measured by the external CTs. This means that if you set the battery to discharge at 5,000 W and your total house and backup load is 10,000 W, the inverter will still import 5,000 W from the grid.

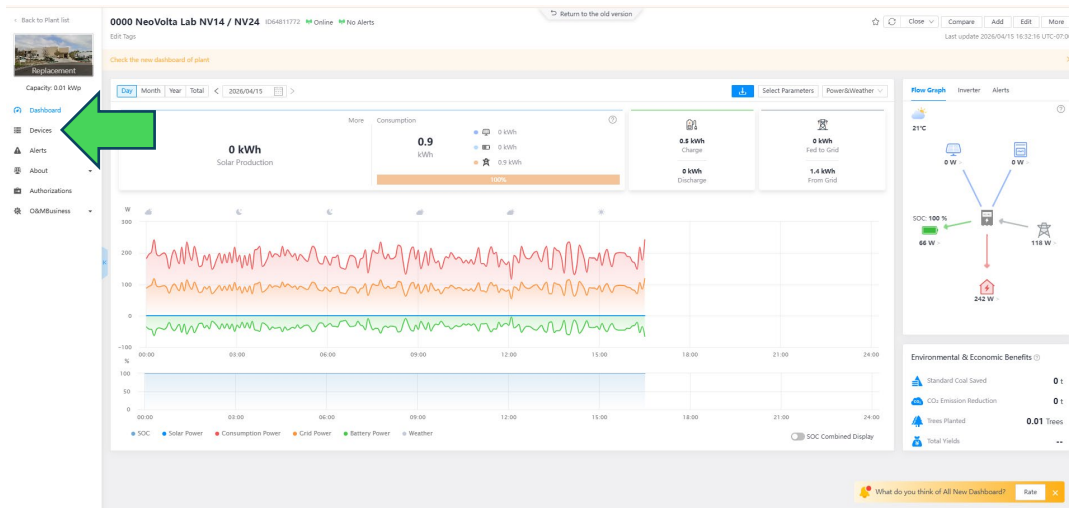
If your total house and backup load is less than the set battery discharge power, the excess battery power will be sent back to the grid.

Knowledge Base Article

How to Sell Power from Battery to Grid at Specific Times

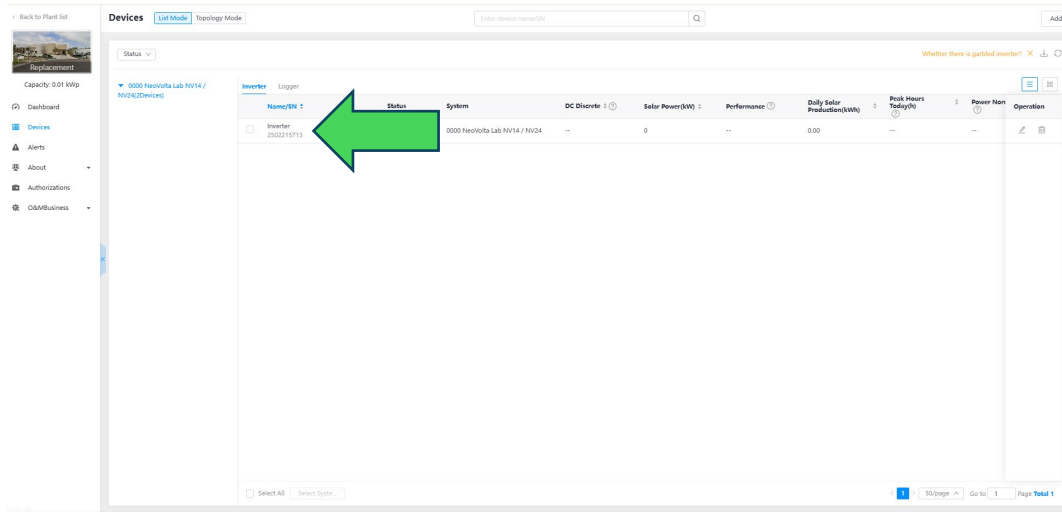
Step I: Battery Configuration

A. Click on Devices

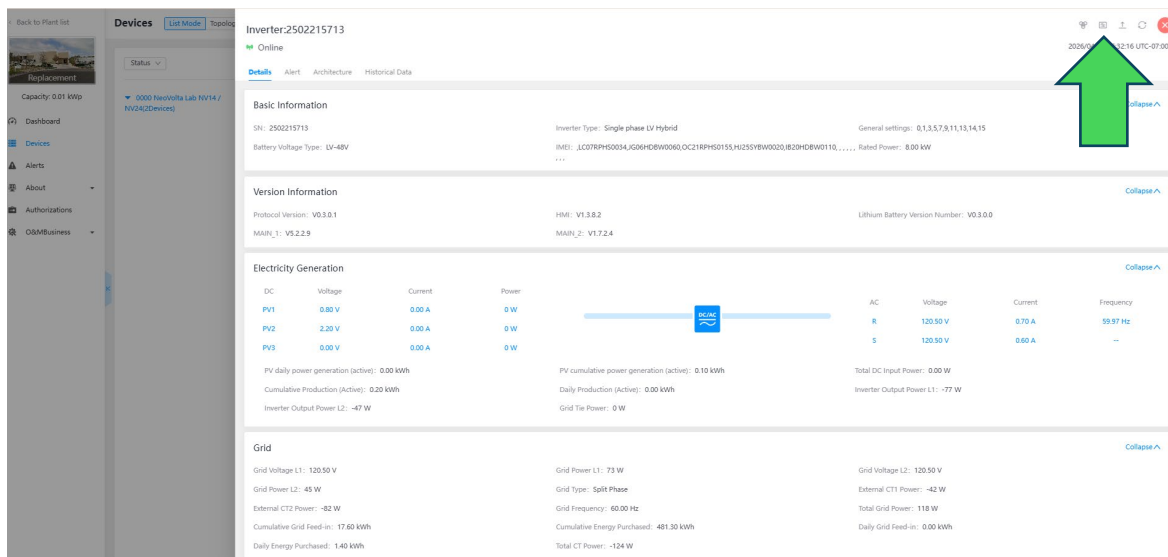


B. Click on Inverters

Knowledge Base Article

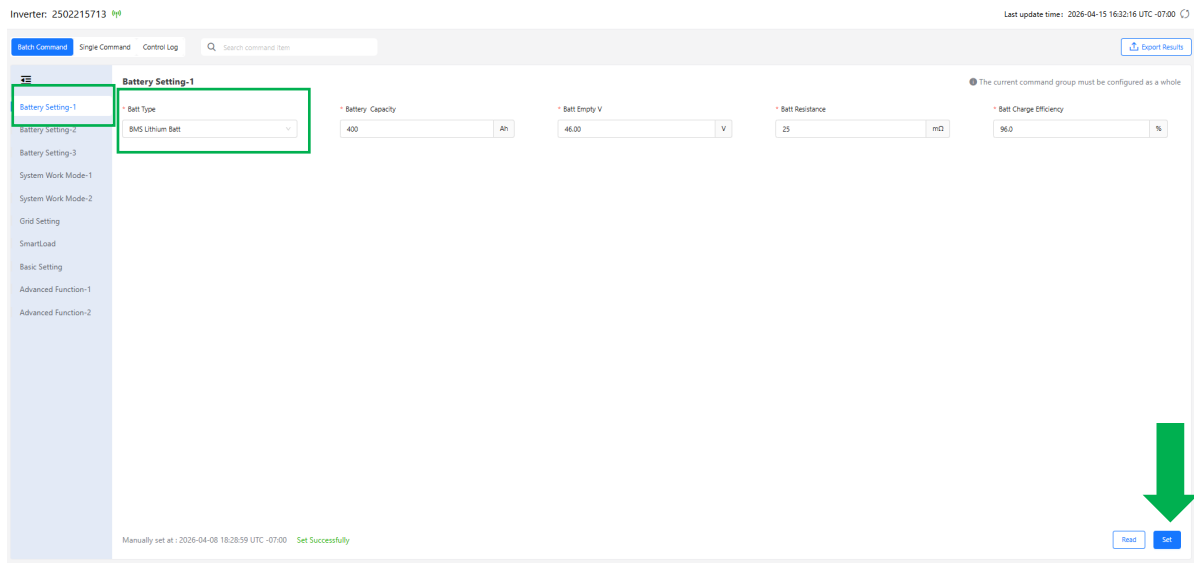


c. Click on Device Control



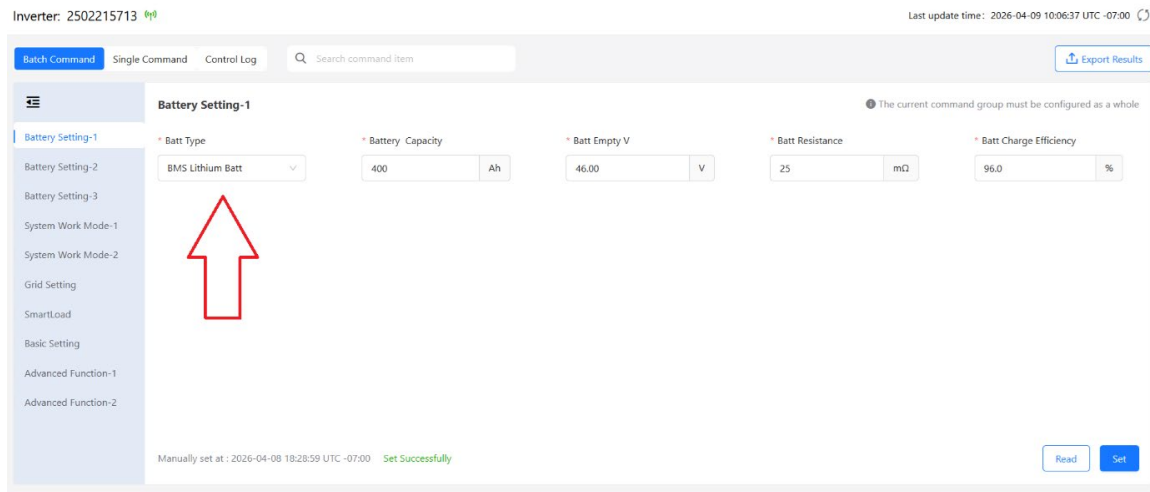
d. Click on Battery Setting-1 and change the Battery Type to lithium and click on SET.

Knowledge Base Article



Step 2: System Work Mode

- Set Work Mode: Selling First

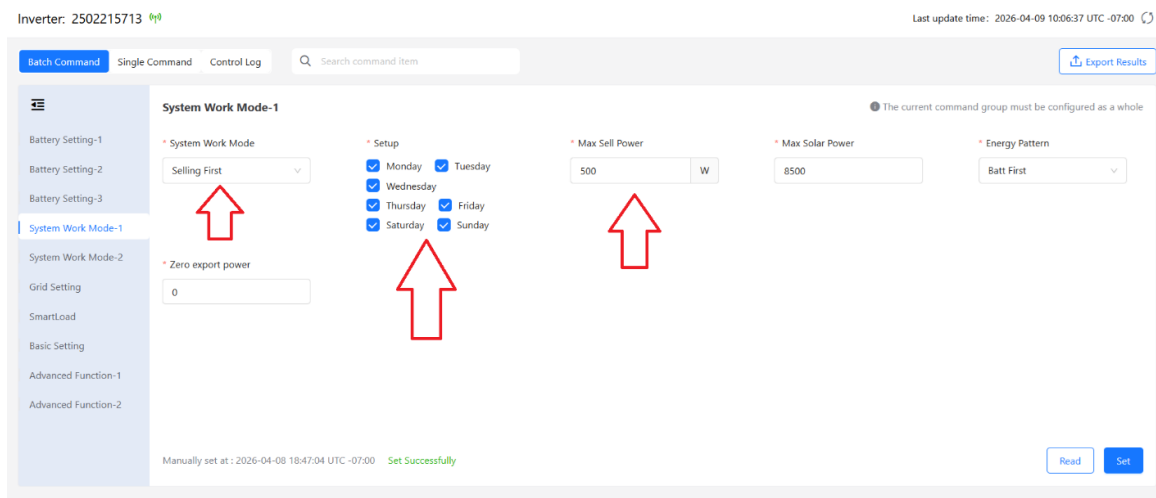


Step 3: Selling Settings

- Configure schedule based on days

Knowledge Base Article

- Set **Max Sell Power** to define the amount of energy you want to export to the grid



Step 4: Time-of-Use (Timeline Settings)

- For the period you want to sell:
 - Set **SOC (State of Charge)** to the minimum percentage you are willing to discharge
- For the period you do NOT want to sell:
 - Set **SOC = 100%** to prevent battery discharge

Knowledge Base Article

Inverter: 2502215713 Last update time: 2026-04-09 10:06:37 UTC -07:00

Batch Command Single Command Control Log [Export Results](#)

System Work Mode-2 The current command group must be configured as a whole

Time of Use

Time	Grid Charge	Gen	Start Time	End Time	Power	Batt	Gen
Time 1	<input checked="" type="checkbox"/>	<input type="checkbox"/>	01:00	06:00	8000 W	100 %	0 %
Time 2	<input checked="" type="checkbox"/>	<input type="checkbox"/>	06:00	08:00	8000 W	100 %	0 %
Time 3	<input checked="" type="checkbox"/>	<input type="checkbox"/>	08:00	12:00	8000 W	20 %	0 %
Time 4	<input checked="" type="checkbox"/>	<input type="checkbox"/>	12:00	16:00	8000 W	100 %	0 %

Manually set at: 2026-04-09 10:16:34 UTC -07:00 Set Successfully [Read](#) [Set](#)